



MITUS 112A

APPLICATIONS

- Live sound PA system or Live sound monitor, DJ system
- School and corporate audio visual sound reinforcement
- Background music/announcement: Restaurants, Pubs, Transportation terminals, Clubs, Auditorium, Theatres
- Gyms, Houses of worship

FEATURES

- 15mm / 0.59" baltic birch plywood cabinet
- Class D built-in amplifier 600W RMS LF, 300W RMS HF
- 12" B&C neodymium woofer with 3" voice coil
- 1" exit B&C neodymium driver with 1.7" voice coil
- 80° H x 50° V rotatable horn
- Input panel with XLR in&link, volume, preset, HP filter, GND lift
- SPL capability: 133dB
- Frequency response 46Hz to 20kHz
- 12 x M10 fly points
- Completely Manufactured in Italy

PROCESSED ACTIVE SPEAKER



PRODUCT DESCRIPTION

The FBT MITUS 112A two-way bi-amplified speaker system shall incorporate 1 x 12" B&C neodymium woofer with 3" voice coil and 1" exit B&C neodymium driver with 1.7" voice coil coupled to a rotatable 80° x 50° horn; thanks to the rotatable HF horn it is possible to create horizontal arrays of 2 enclosures for a total coverage of 130°. The FBT MITUS 112A shall meet the following performance criteria: Frequency response of 50Hz to 20kHz, Maximum SPL of 133dB, 600W RMS + 300W RMS class D amplifiers. The FBT MITUS 112A provides a DSP with 8 EQ presets. The FBT MITUS 112A feature 0.59" baltic birch plywood construction covered in a scratch & scuff resistant black finish; the front shall be protected by a heavy duty metal grille with anti-resonance spacers and exclusive synthetic cloth to protect the drivers. The control panel provides XLR input & link, level, preset, HP filter and GND lift. The 12 M10 anchoring points built into the cabinet allow the FBT MITUS 112A speaker to be surface mounted on ceilings and a standard 1.38" speaker stand socket allows the FBT MITUS 112A to be mounted on speaker stands.

ELECTRICAL PERFORMANCE

System Type	2-way - bi-amplified
Built-in Amplifiers LF / HF *	cont.: 400W RMS / 200W RMS max.: 600W RMS / 300W RMS peak.: 1200W / 600W
Frequency Response @ -6dB	50Hz - 20kHz
Input Impedance	22kOhm
Maximum SPL (cont. / peak) **	126dB / 133dB
Dispersion	80° H x 50° V
Crossover Frequency	1.5 kHz
AC Power requirement	640 VA

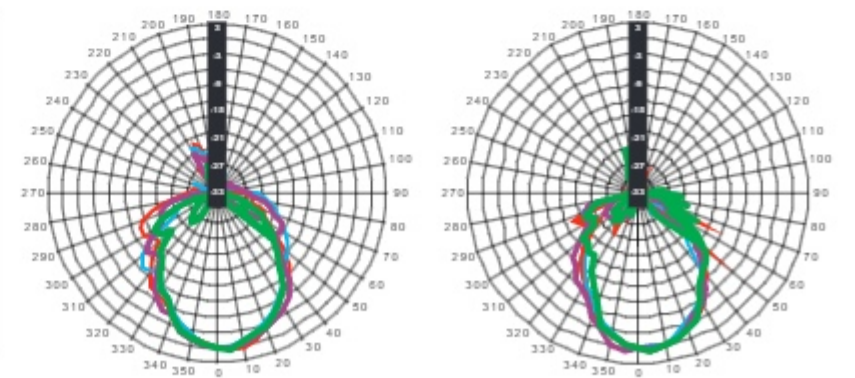
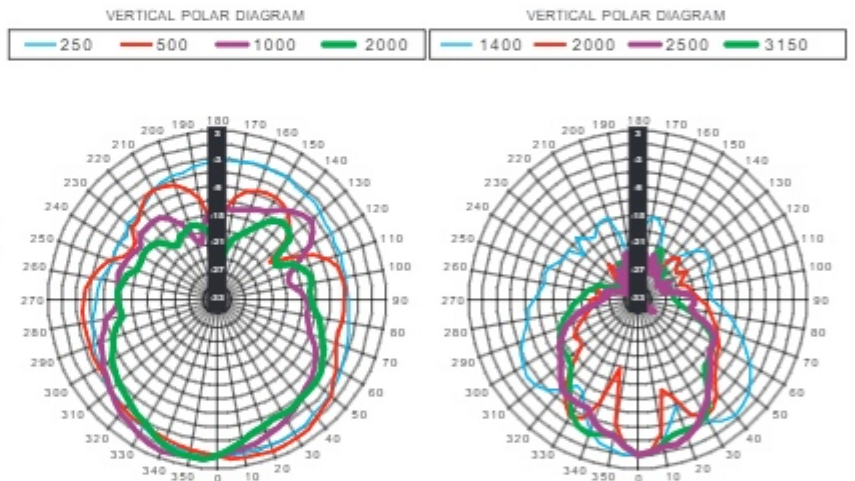
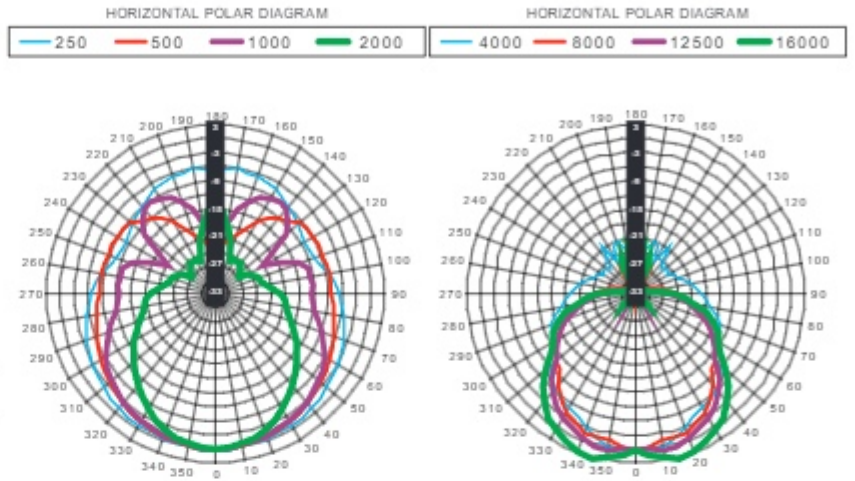
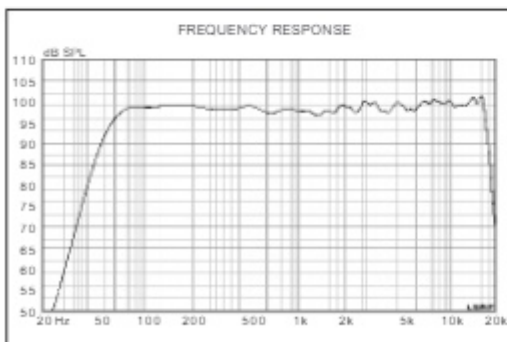
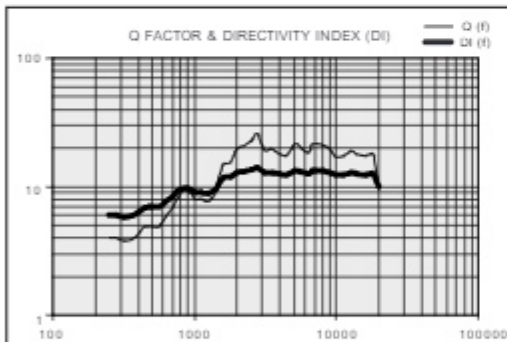
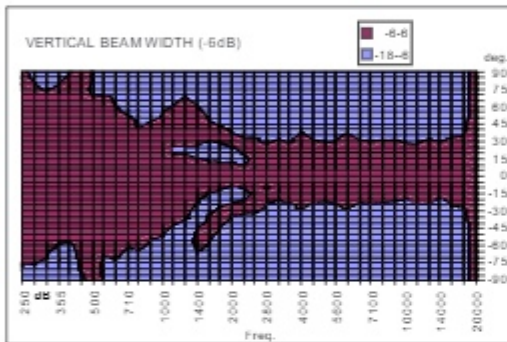
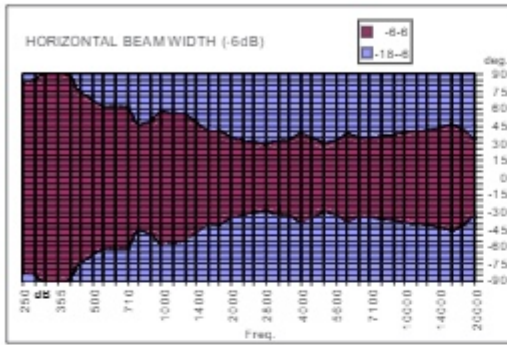
PHYSICAL

Low Frequency Woofer	1 x 12" - 3" coil
High Frequency Driver	1 x 1" - 1.7" coil
Input Connectors	XLR with loop
Net Dimensions (WxHxD)	15" x 26" x 15" 380 x 660 x 380mm
Shipping Dimensions (WxHxD)	19.29" x 29.52" x 19.29" 490 x 750 x 490mm
Net Weight	45 lbs / 20 kg
Shipping Weight	48.5 lbs / 22 kg
Enclosure Material	birch plywood
Power cord	5 mt.

* CONT.: 500mS, rms power on nominal speaker impedance
MAX.: 2mS burst, rms power on nominal speaker impedance
MAX PEAK: based on max peak output voltage and nominal speaker impedance

** CONT. SPL: free space, based on continuous power amp rating and LF transducer average sensitivity data, 125mS time average
PEAK SPL: free space, based on max peak power amp rating and system peak sensitivity, 10mS time average

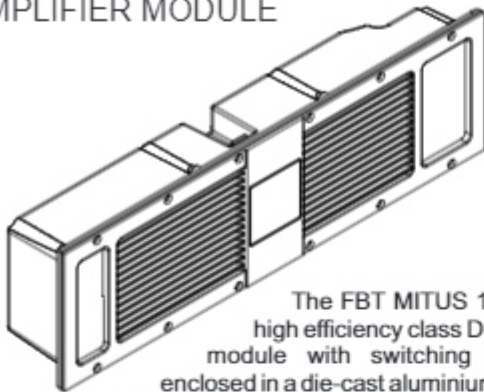
DIAGRAMS





MITUS 112A

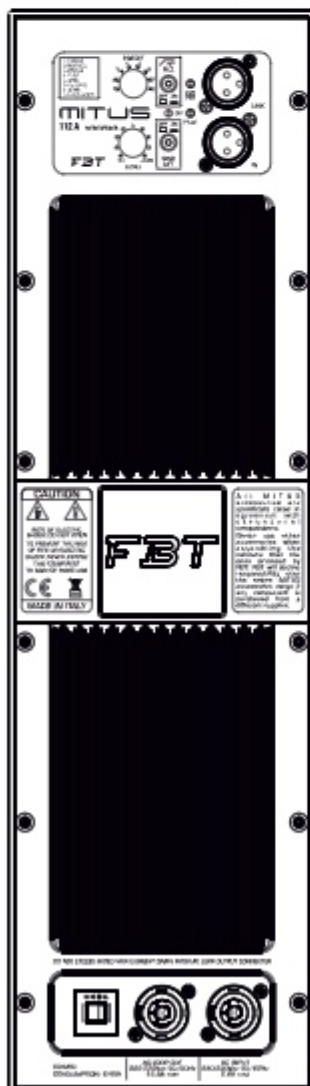
AMPLIFIER MODULE



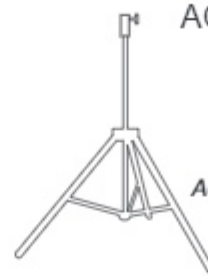
The FBT MITUS 112A provides a high efficiency class D power amplifier module with switching power supply enclosed in a die-cast aluminium chassis.

This provides maximum protection of the electronics from dust or dirt, prevents air loss through the input control panel that can cause fastidious noise, and it maximizes heat dissipation avoiding the use of a fan to cool the circuitry.

CONNECTION PANEL



ACCESSORIES



BOX 22BK

Adjustable aluminum floor stand
Ø 1.38" with Ø 1" adapter
max. weight 88lb.



BOX 62BK

Adjustable for sub-satellite
speaker connection with
safety locking device Ø 1.38" M20



BOX 32BK

Adjustable aluminum floor stand
damped safety mechanism
max. weight 154lb.

DIMENSION DRAWING

